

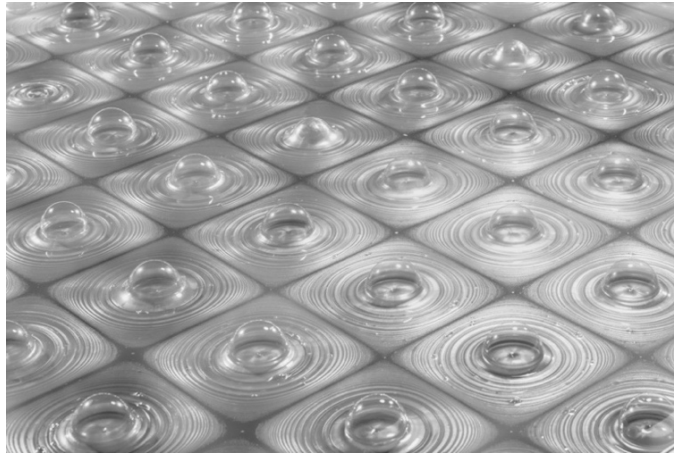
Sculptor Nawa Kohei to Unveil Work Created for This Exhibition

Exhibition to Mark Opening of Towada Community Center (Name TBD)

Nawa Kohei: Generative Interface

Towada Art Center: June 18 – November 20, 2022

Towada Community Center (Name TBD): October 1 – November 20, 2022 *TBD



Biomatrix, 2018
Mixed media, Dimensions variable
Courtesy of SCAI THE BATHHOUSE, Photo: Omote Nobutada | Sandwich
*Reference Work

A solo exhibition titled *Generative Interface*, devoted to the work of sculptor Nawa Kohei, is to be staged at the Towada Art Center, and the new Community Center (final name TBD, designed by Sou Fujimoto Architects) opening in Towada in September. The exhibition will run from, June 18 to November 20, 2022 at the Towada Art Center, and from October 1 to November 20, 2022 at the Community Center.

Through his unique concept of perceiving the world in terms of “cells” (both biological and/or particles), Nawa pursues new approaches to sculpture, spanning a variety of techniques, and materials, including glass and liquid. Presenting works from a range of series including the *Esquisse* drawings from the artist's postgrad studies, the well-known *PixCell* sculptures, and his new *White Code* series, *Generative Interface* will show the development of Nawa's practice over time, focusing on his expansion of the concept of sculpture through the exploration of materials.

By superimposing new images on phenomena unchanged since antiquity, it is possible to expand our interpretations of those phenomena to an infinite degree. For example, overlaying the contemporary image of "code" on the phenomenon of "intermittent rain" allows us to expand the meaning of that phenomenon. This exhibition deals with these marginal information domains that spill over from day-to-day understanding, and the expansion of sensation and imagination in response.

The title *Generative Interface* shows the concept underlying production of all Nawa Kohei's works. In his *PixCell* series, where surfaces change form in filmic fashion with the shifting of perspectives caused by the lens effect; and *Biomatrix (W)* in which bubbles erupt in a grid pattern from silicon oil, constantly-shifting interfaces subtly stimulate the vision, sharpening the viewer's sensibilities. Nawa's concept focuses on the "skin as interface between matter and sensibility, against a background of the reality of perception and cognition in the digital era.

Contact

Towada Art Center Communications: Otani Sae
Tel. +81(0)176-20-1127 Fax. +81(0)176-20-1138
press@towadaartcenter.com www.towadaartcenter.com

Exhibition Highlights

1. Showcasing developments in the practice of Nawa Kohei by presenting a selection of very different series old and new
2. Unveiling the artist's latest work *Biomatrix (W)*, made for the exhibition
3. First museum showing of a new work in the *White Code* series

New works from the artist making their museum debuts

White Code

Nawa's *White Code* works consist of pigment of suitably modified viscosity dripping onto a support traveling at a leisurely 1cm/second. The blobs of paint coming into contact with the rough linen surface occasionally spread and connect to each other, morphing in random ways while retaining their volume. These rain-like arrangements of dots, reminiscent of the Morse code used in the early days of the telegraph, or program code running across a black and white screen, possess a material quality suggestive of a digital signal generated by an analog device, finding their presence between information and meaning joined by optic and haptic.

Biomatrix (W)

In *Biomatrix (W)* bubbles (cells) erupt in rapid succession in a grid pattern on an interface of viscous silicon oil with a pearly sheen. Clear bubbles stretched by surface tension slowly burst, the unexpectedly leisurely pace of this phenomenon prompting a sensation that almost paralyzes the vision. Each individual bubble is a unit of a phenomenon triggered by motion, and can at the same time be likened to the element of a cell that forms the membrane. Similarly, the surface of the liquid material in constant flux could be viewed as an interface that amplifies the visual information.

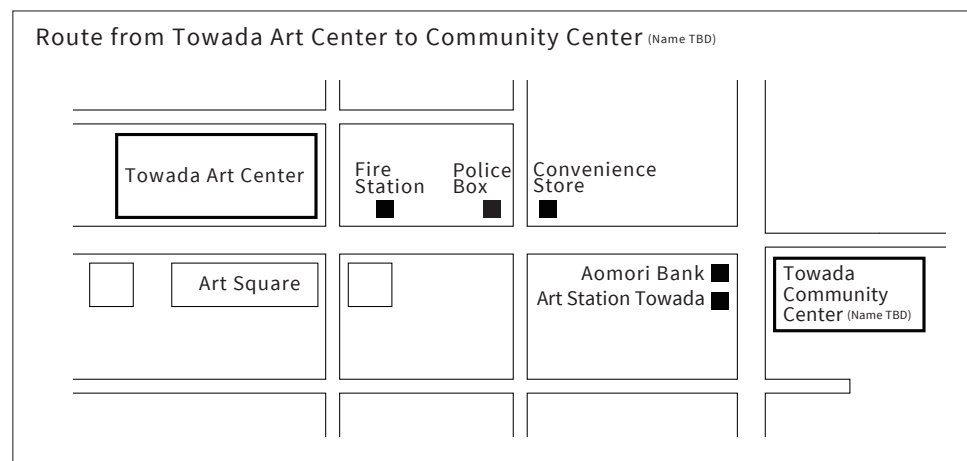
Towada Community Center (Name TBD)

The works in this exhibition by Nawa Kohei will be displayed not only at the Towada Art Center, but also at the Community Center (name TBD) opening in Towada in September.

The Community Center will display planar works, such as *Dot* and *Line* from the artist's *Array - Black* series of prints.



Dot Array - Black #239, 2022
UV print, paper, acrylic, wood, 56 × 100 cm
Courtesy of Gallery Nomart, Photo: Kato Shigefumi



Contact

Towada Art Center Communications: Otani Sae
Tel. +81(0)176-20-1127 Fax. +81(0)176-20-1138
press@towadaartcenter.com www.towadaartcenter.com

About the Artists

NAWA Kohei



Sculptor / Director of SANDWICH Inc. / Professor at Kyoto University of the Arts

Born in 1975, and based in Kyoto, Japan, Nawa Kohei received a PhD in Fine Art/Sculpture from Kyoto City University of Arts in 2003, and established SANDWICH in 2009.

Focusing on the surface “skin” of sculpture as an interface connecting to the senses, Nawa began his *PixCell* series in 2002 based on the concept of the cell, symbolizing the information age. Adopting a flexible interpretation of the meaning of sculpture, he produces perceptual experiences that reveal the physical properties of materials to the viewer through works addressing themes related to life and the cosmos and to artistic sensibility and technology, including *Direction*, in which he produces paintings using gravity, *Force*, in which silicone oil pours down through a space, *Biomatrix*, in which bubbles and grids emerge on a liquid surface, and *Foam*, in which bubbles form enormous volumes.

Nawa has also worked on architectural projects, including the art pavilion KOHTEI. *VESSEL*, a performance work produced in conjunction with Belgo-French choreographer and dancer Damian Jalet, has been presented around the world since its premiere in 2015. In 2018, his sculpture *Throne* was exhibited under the Pyramid at the Musée du Louvre in Paris, France.

Public Program

Artist's talk

Date: June 18, 2022 / Time: 13:00 – 14:00 / Location: Towada Art Center – Café

Admission: Free *Ticket for the exhibition is required.

Speaker: Nawa Kohei

Gallery talk by curator

Date: June 25, August 7, 2022 / Time: 11:00 – 12:00

Location: Towada Art Center – Special Exhibition Room

Admission: Free *Ticket for the exhibition is required.

Contact

Towada Art Center Communications: Otani Sae
Tel. +81(0)176-20-1127 Fax. +81(0)176-20-1138
press@towadaartcenter.com www.towadaartcenter.com

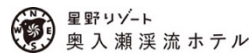
About the Exhibition

Title	Nawa Kohei: Generative Interface
Towada Art Center	
Dates	June 18 – November 20, 2022
Hours	9:00–17:00 (Last admission 30 minutes before closing)
Closed	Mondays (Except for National Holidays, in which case the art center is open on the holiday and closed the following Tuesday). *Please check our website for the latest information.
Admission	1,800 yen 200 yen/ticket discount for groups of 20 or more Under18: Free

Towada's new community center (Name TBD)

Dates	October 1 – November 20, 2022 *TBD
Hours	9:00–17:00 (Last admission 30 minutes before closing)*TBD
Closed	Mondays (Except for National Holidays, in which case the art center is open on the holiday and closed the following Tuesday).
Admission	Free

Organized by	Towada Art Center
Supported by	Asahi Broadcasting Aomori Co., Ltd., Aomori Broadcasting Corporation, Aomori Television Broadcasting Co., Ltd., The Daily-Tohoku Shimbun Inc., The To-o Nippo Press, and Towada City Board of Education
Special Support	Nanjo and Associates Group
Exhibition Sponsors	Tezuka Kiyoshi (kōjin kyoto), Fujinami Katsuyuki (President, VB Japan Technology Co., Ltd.)
Exhibition Support	Warehouse TERRADA, First Plywood Co., Ltd., Aomori Plywood Co., Ltd., Hoshino Resorts Oirase Keiryu Hotel
Curator	Mitome Sayaka



Towada Art Center

The Towada Art Center opened in 2008 as the first contemporary art center in Japan's Tohoku region. The art center's permanent exhibition is comprised of 38 works by world-class artists, including Yayoi Kusama, Yoshitomo Nara, Shiota Chiharu, and Ron Mueck. The collection expands beyond the art center to the Art Square, a park-like area where children and adults alike can stroll, relax, and interact with the outdoor artwork.

10-9 Nishi-Nibancho, Towada, Aomori 034-0082

TEL: +81(0)176-20-1127 / FAX: +81(0)176-20-1138 / www.towadaartcenter.com



Contact

Towada Art Center Communications: Otani Sae
Tel. +81(0)176-20-1127 Fax. +81(0)176-20-1138
press@towadaartcenter.com www.towadaartcenter.com

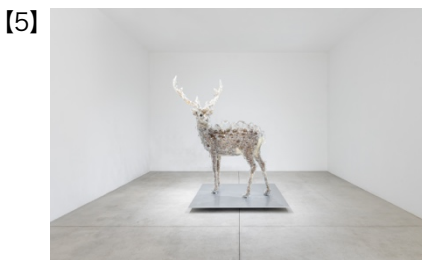
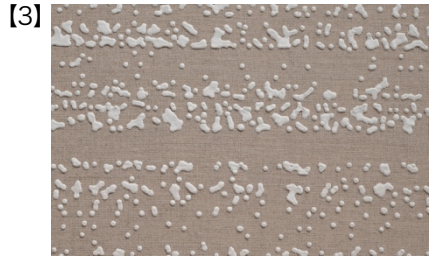
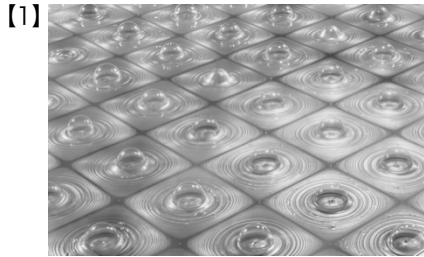
Promotional Artwork

Please check the box for the number of the desired image and send this request form by fax or email.

Fax: 0176-20-1138 / Email: press@towadaartcenter.com

10-9 Nishi-Nibancho, Towada-shi, Aomori Tel: +81 (0) 176-20-1127

Towada Art Center Communications: Otani Sae



Media Name

Newspaper | Magazine | Museum | TV | WEB | Other ()

Company Name

Contact Person

Address

Telephone

Email Address

Rules for Image Reproduction

1. Please include all credits.
2. Please do not crop the images.
3. Please do not cover any part of the images with text.
4. Please contact the Towada Art Center with a draft for confirmation before publishing.